

BEYOND

~ Exclusive Voyage for Cycling Enthusiasts ~



suggested itinerary

Day 1

ARRIVAL & GREETINGS

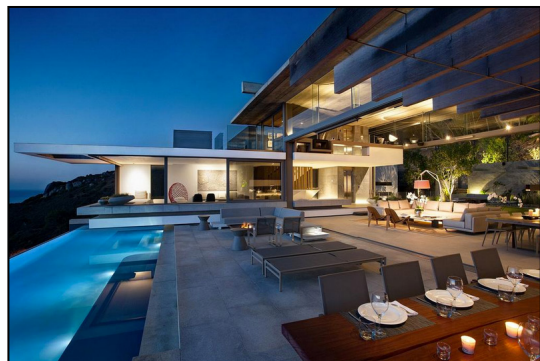
Villa Beyond

(Time TBA)

- Arrival to Cape Town International Airport.
- Greetings by our team, transfer to Beyond Private Luxury Villa located in prestigious Clifton Beach in vehicles Mercedes V-class .
- Transfer will take approximately 25 minutes.
- Greetings at the Villa, where the light meal and refreshments will be prepared by our private chef.
- The Villa is serviced by the Royal Portfolio group of Hotels and offers unique location overlooking Atlantic Ocean along with professional highly appraised service.
- Time for rest after the flight or straight into action.
- Meeting with our guides and revising of itinerary to fine-tune with everyone's expectations and needs, as the current weather conditions. Professional mechanic familiarising with guest bicycles and adjustments that need to be performed before the adventures begin.

Suggested day/afternoon activities:

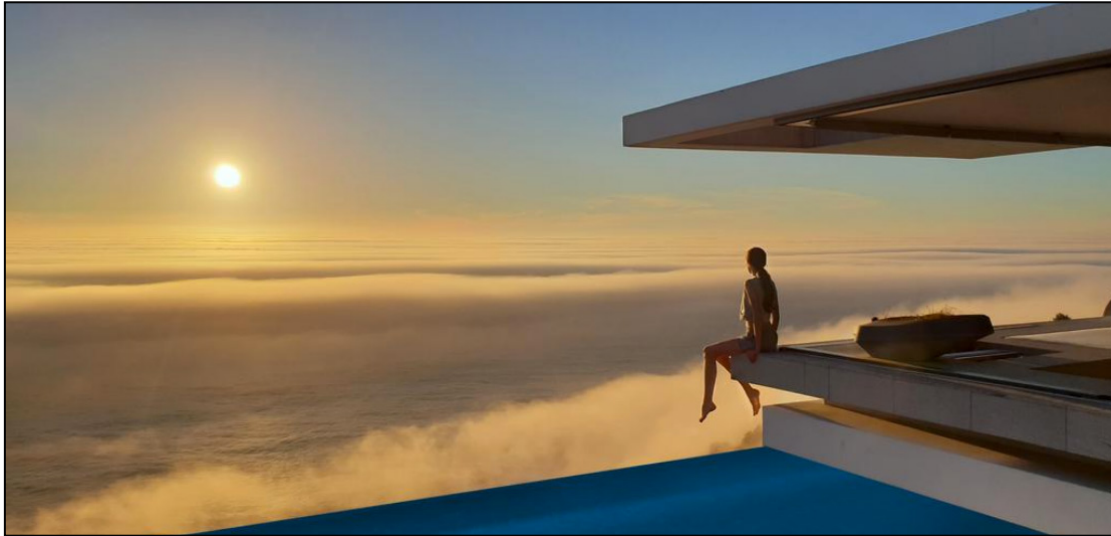
- Short 1 hour Cycle along the Atlantic Coastline
- Private Tour of Zeits Mocoa Museum
- Lunch/Dinner at the Villa
- Lunch/Dinner at one of the local Restaurants
- Yoga and Meditation Journey
- Massage



Curated by Rada Binovska

BEYOND

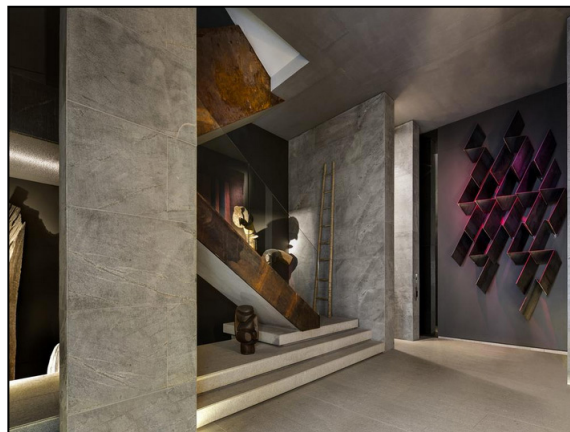
~ Exclusive Voyage for Cycling Enthusiasts ~



Accommodation

The Silo Hotel's Private Residences offer the best of both worlds – the privacy, freedom and comfort of your own home and the amenities, staff and services of The Silo Hotel. All guests are treated as guests of The Silo Hotel with access to the dining facilities, rooftop, pool, spa and concierge services. Our Private Residences are all within a 15 minute drive from The Silo Hotel. The properties range in size from four to six bedrooms and offer breath-taking views of the Atlantic Ocean with private cinemas, games rooms, wine cellars, spa facilities, gyms and heated swimming pools. They are ideal for families or groups of friends travelling together and for longer stays.

Suspended over the highest point in Clifton, Cape Town, and with breath-taking views of the Atlantic Ocean, you'll find Beyond, a six-level luxury villa, has been designed as a timeless wonder. With six en-suite bedrooms, multiple, open-plan entertainment areas, as well as a bar on a glass floor, gym, sauna, steam room and rim-flow pool.



BEYOND

~ Exclusive Voyage for Cycling Enthusiasts ~



Curated by Rada Binovska

BEYOND

~ Exclusive Voyage for Cycling Enthusiasts ~



BEYOND

~ Exclusive Voyage for Cycling Enthusiasts ~

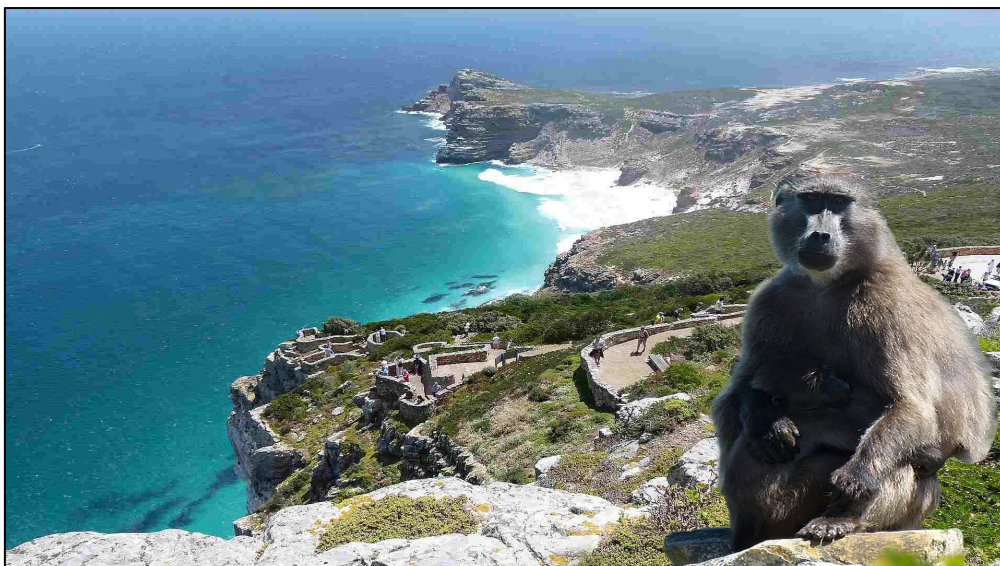
Day 2

CAPE OFGOOD HOPE NATURE RESERVE

Villa Beyond

(Time TBA)

- Breakfast served for the guests;
- Short Transfer to the helicopter pad nearby (Camps Bay School);
- Equipment transported to starting location at Cape Point Nature Reserve;
- 20 minutes flight over the tip of Cape of Good Hope and landing at Buffels Bay;
- 3-4 hour cycling journey through the reserve and along the False Bay Coastline as well as Scarborough and Misty Cliffs, Red Hill and Simons Town.
- Stop at the Penguin Colony at Boulders Beach;
- Refreshments at the Beach;
- Vehicles, Mechanic, Paramedic and Guides Team available and short distance from the cyclists;
- Lunch at Harbour House Restaurant;
- After Lunch Ride back or in Vehicles to Millers Point;
- Helicopter Transfer back to Camps Bay
- Additional Activities suggested on the day:
 - SUP,
 - Kayaking,
 - Surfing,
 - Sunset picnic at Clifton Beach;
 - Morning and evening Meditation, Breathwork and Yoga Sessions;
- Dinner options:
 - Traditional South African Braai (BBQ);
 - Restaurants in Cape Town;
 - Private Chef at the Villa will adhere to all your wishes and expectations;
 - Live musical performance of local choice of music at the Villa;



Cape of Good Hope Nature Reserve

BEYOND

~ Exclusive Voyage for Cycling Enthusiasts ~

Day 3 ATLANTIC COASTLINE Villa Beyond



View of Hout Bay from Chapmans Peak Drive

(Time TBA)

- Breakfast served for the guests;
- Meet with guides;
- Transfer in the vehicles towards the starting point in Hout Bay (25 minutes);
- Ride over the famous spectacular Chapmans Peak Drive (1,5 hour maximum);
- Stop at the Noordhoek Village for lunch and greetings by famous French/South African chef Franck Dangeroux;
- Vehicles transfer to Norval Foundation (Contemporary Art Museum)
- Curated tour of Norval Foundation;
- Followed by ride via Spectacular Constantia Valley;
- Vehicle transfer to Villa (45 minutes);
- Other Suggested Activities:
 - Morning and evening Meditation, Breathwork and Yoga Sessions;
 - Horse Ride on Spectacular Noordhoek Long Beach;
 - Wine Tasting and Cellar Tour with the local winemaker;
 - Private 40 minutes boat ride to Seal Island;
- Dinner options:
 - Traditional South African Braai (BBQ);
 - Dinner and rooftop sundowners at the Silo Hotel;
 - Top Restaurants in Cape Town;
 - Private Chef at the Villa will adhere to all your wishes and expectations;
 - Live musical performance of local choice of music at the Villa;

BEYOND

~ Exclusive Voyage for Cycling Enthusiasts ~



Picture perfect Clifton Beach

Day 4

EXPLORE THE OLD CITY, TABLE MOUNTAIN

Villa Beyond

(Time TBA)

- Breakfast served for the guests;
- Meet with guides;
- Hike or Cable Way Ride up Spectacular Table Mountain;
- Visit to Kirstenbosch Botanical Gardens;

- Lunch Options:
 - Visit to the Old Biscuit Mill authentic Crafts and Food Market;
 - Visit to Oranjesicht City Market;
 - Picnic/ Lunch at Kirstenbosch Botanical Gardens;
 - Lunch at Pot Luck Club;
 - For meat lovers Lunch at CARNE;

- Other Suggested Activities:
 - Morning and evening Meditation, Breathwork and Yoga Sessions;
 - Private Tour through the Local Art Galleries;
 - Stroll along V&A Waterfont;
 - Sunset Yacht Cruise to Clifton Beach;

- Dinner options:
 - Private Chef at the Villa will adhere to all your wishes and expectations;
 - Test Kitchen ~ #1 Best Restaurant in South Africa;

BEYOND

~ Exclusive Voyage for Cycling Enthusiasts ~



Protea Flower



Kirstenbosch Botanical Garden

BEYOND

~ Exclusive Voyage for Cycling Enthusiasts ~

Day 5
CAPE WINELANDS
La Residence



(Time TBA)

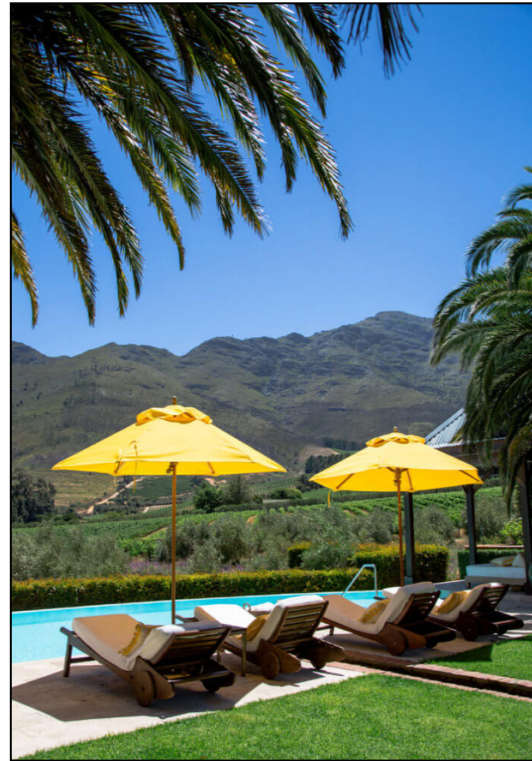
- Breakfast served for the guests;
- Short Transfer to the helicopter pad nearby (Camps Bay School);
- Equipment and luggage transported to Franschhoek;
- 30 minutes flight to Delair Graff Estate;
- Lunch and Winetasting at Delair Graff;
- Vehicle Transfer to La Residence;
- Rest and enjoy the beautiful rooms at one of the most famous Hotels in South Africa;
- Other Suggested Activities:
 - Morning and evening Meditation, Breathwork and Yoga Sessions;
 - Extra Winetastings at Babylonstoren
 - Historical Tour of Stellenbosch;
 - Stroll through the Franschhoek Old Town as well as visit to local Huguenot Museum;
- Dinner options:
 - Dinner at La Residence;
 - Dinner at one of the local Restaurants: (options tba);

Curated by Rada Binovska

BEYOND

~ Exclusive Voyage for Cycling Enthusiasts ~

○ Juice Detox;



Accommodation

Located in the beautiful Franschhoek Valley on a private 30 acre estate, La Residence sets the benchmark for luxury accommodation in the Cape Winelands.

La Residence is surrounded by Cabernet Sauvignon and Shiraz vineyards, olive groves and plum orchards, with a spectacular mountain backdrop and breath-taking views of the undulating countryside. Be transported to a world of exquisite beauty, opulence and complete tranquillity at this luxury Franschhoek hotel.

Glittering Indian chandeliers hang from the vaulted ceiling, original artwork and huge mirrors grace the walls, while the furnishings of Liz Biden are colourful, stylish and comfortable. Elegant antiques and exquisite flowers create a feeling of refinement and sophistication while space and personal service are the ultimate luxuries. The 11 Suites at the hotel are ideal for couples while the 5 Vineyard Suites offer privacy and space for families and groups of friends.

BEYOND

~ Exclusive Voyage for Cycling Enthusiasts ~



Day 6

RIDE IN THE WINEYARDS

La Residence

(Time TBA)

- Breakfast served for the guests at La Residence;
- Meet the guides and start the ride around the vineyards of Frascoek Valley;
- Stops and optional winetastings suggested at:
 - MORESON
 - Mullineux & Leeu Family Wines
 - GRAND PROVENCE
 - Lunch at the Kitchen at MAISON
- Return by Bicycles or in Vehicles to La Residence;
- Relax at the hotel;
- Other Suggested Activities:
 - Visit to Motor Museum;
 - Extra Winetastings at Babylonstoren
- Dinner options:
 - Dinner at La Residence;
 - Dinner at one of the local Restaurants: (options tba);
 - Juice Detox;

BEYOND

~ Exclusive Voyage for Cycling Enthusiasts ~



Franschhoek Valley

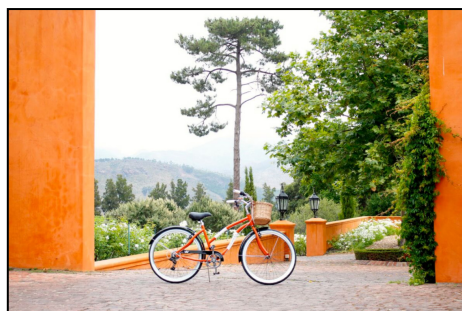
In Franschhoek, breathtaking scenery, warm hospitality, world-class cuisine and the finest wines all combine to create lasting memories.

The valley was originally settled in 1688 by French Huguenot refugees, who brought with them their age-old wine and food culture. There are a variety of cellars, from small boutique wineries that cater for those in search of something unique, to large cellars that offer organised tours and conducted tastings.

Franschhoek has long boasted a disproportionate number of South Africa's top restaurants. Leading chefs create everything from cutting-edge cuisine to stylish light meals using the freshest produce of the valley, paired with magnificent local wines.

Franschhoek offers a wide range of accommodation, from luxury hotels to country auberges and intimate B&Bs. For the business traveller, there are conference facilities aplenty.

With numerous romantic venues from which to choose, Franschhoek is also a wonderful place to get married. A host of shops and galleries line the Main Street, providing a wonderful choice of boutique fashion and jewellery studios, world-class collections of artwork and photography, speciality delis and produce, and interesting bric-a-brac to browse.



BEYOND

~ Exclusive Voyage for Cycling Enthusiasts ~

Day 6

HERMANUS

La Residence or Birkenhead House



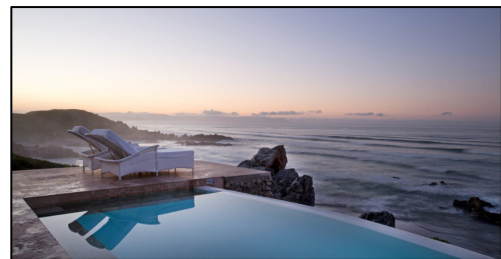
(Time TBA)

- Breakfast served for the guests at La Residence;
- Vehicle or Helicopter Transfer to Hermanus;
- Walk along the spectacular coastal Path where the whale watching is possible from the shores at certain time of the year;
- Lunch at Birkenhead House;
- Helicopter Transfer back to Franschhoek ~ or one night stay at Birkinhead;
- Other Suggested Activities:
 - Shark Cage Diving;
 - Boat Based Whale Watching;
 - Hiemel en Aarde Valley winetasting with local sommelier;
 - Short Hike to the Waterfall at Fernkloof Nature Reserve
- Dinner options:
 - La Residence;
 - Dinner at one of the local Restaurants: (options tba);
 - Juice Detox;



BEYOND

~ Exclusive Voyage for Cycling Enthusiasts ~



Day 7

TRAVEL TO BOTSWANA

Tuludi Camp * malaria free

Time TBA)

- Breakfast served for the guests at La Residence;
- Vehicle or helicopter transfer to Signature Private Departure at Cape Town International Airport;
- Private flight to MAUN;
- Swift passport control assistance;
- Transfer to Maun;
- Snacks and welcome by camp team on arrival to Maun;
- 15 minutes helicopter transfer to the starting point where the bicycles are prepared for the guests;

BEYOND

~ Exclusive Voyage for Cycling Enthusiasts ~

- 40-60km ride on elephant trails, the low bush going on the fault line into more then 12 craters possibly created by meteors, that are now serving as water holes where the eland, kori bustards, wildebeest and zebra drink on high ground.
- Following a slow downhill through mopane forest into a vast flat depression;
- Possible spotting of herds of buffalo that love this area;
- Transfer to helicopter pad,
- 40 minutes flight to Tuludi Camp;
- Arrival to the Camp;
- Campfire and dinner at the Lodge;



BEYOND

~ Exclusive Voyage for Cycling Enthusiasts ~



Tuludi to reflect the space and freedom of the surroundings and the high, pitched canvas roofs of the bedrooms create light and airy spaces to retreat to at the end of a busy day in Khwai. The fact that each tented room is a wonderful 60 square metres in size also helps! Wooden boardwalks wind through the leadwood trees to connect the seven 'treehouse-style' tents and each is kept cool by the shady boughs. Inside, the earthy palette is sophisticated and warm and you'll find separate dressing and sleeping areas, an ensuite bathroom, indoor and outdoor showers, and splashy bathtubs. If that wasn't enough space to relax, there's also a sunken seating area and a private plunge pool on the outside veranda (a further 44 sq metres of space), both overlooking those enormous floodplains.

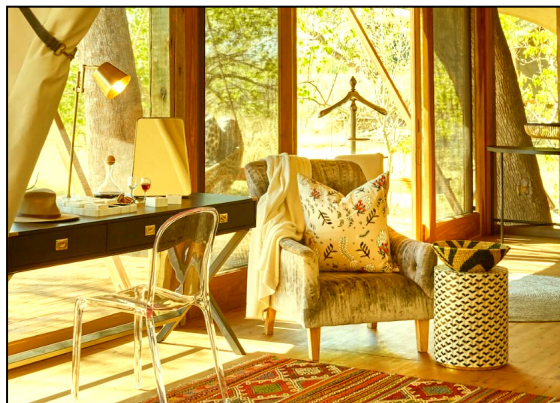
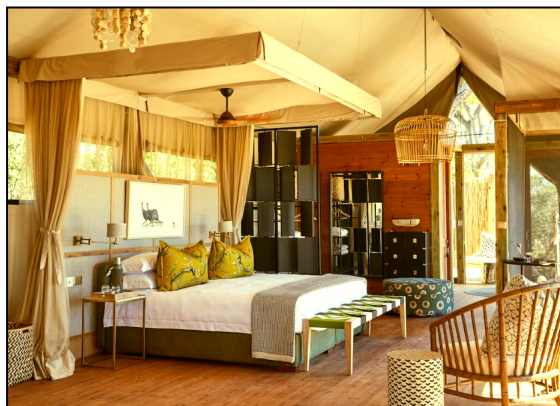
Back at the main area, the lofty space is raised on decks and strewn with cushions, sofas and armchairs to flop into for an afternoon of view-gazing and wildlife-watching. Handily, it's positioned in the perfect spot to watch the sunset so if you choose to stay in camp for an evening, you won't be disappointed. Next door is the dining area and just in front is a firepit, meaning you won't have far to wander for a post-dinner drink and campfire chatter. There's also a large swimming pool to cool off in the heat of the day, a treehouse library, elevated four metres in the boughs of the trees, and plenty of trinkets and treasures that tell the story of both the camp and the extraordinary ecosystem.

BEYOND

~ Exclusive Voyage for Cycling Enthusiasts ~

Accommodation & Amenities

- 7 tented rooms: 6 twins/doubles and 1 family tent (King size bed and 2 x additional singles).
- Interior floor space is a whopping 62.5 square metres (and outside is a further 44!).
- Ensuite bathrooms with indoor and outdoor showers, and bathtubs.
- Plunge pool at each room.
- Swimming pool (at the main area).
- Treehouse library, elevated 4 metres in the boughs of the trees.
- Wifi available: Yes.
- Hairdryers: Yes.
- Battery charging facilities: In the mess tent & in room.
- Complimentary laundry service.
- Child policy: we welcome children aged 6 years and older.
- Disabled access: please enquire with reservations
- What's included?
- All meals, daily activities, local drinks and laundry.



THE LUXURY OF SPACE

If you've been forever dreaming of an iconic Okavango Delta experience, then end your search with Tuludi. The camp is located in the Khwai Private Reserve, over 200,000 hectares of pristine wilderness, and the landscape is fit for a fairy tale: floodplains stretch as far as the eye can see and the glistening waterways and emerald forests attract all the stars of the safari show. At Tuludi itself, we wanted to capture the magic of being enfolded in nature and the serenity and space that comes with it. Picture seven, tree-house style rooms, shaded by the boughs of cool leadwood trees, sophisticated interiors that mix the contemporary with the traditional, and airy spaces, dotted with intriguing maps, botanicals and treasures from around the area. The result? An exclusive oasis that you'll be delighted to return to after a day exploring the extraordinary ecosystem.

BEYOND

~ Exclusive Voyage for Cycling Enthusiasts ~

Day 8

ADVENTURE RIDE IN THE WILDERNESS

Tuludi Camp * malaria free

(Time TBA)

- Breakfast served for the guests at the Camp;
- 15 minutes helicopter transfer to the starting point where the bicycles are prepared for the guests;
- 40-60km ride on elephant trails, the low bush going on the fault line into more than 12 craters possibly created by meteors, that are now serving as water holes where the eland, kori bustards, wildebeest and zebra drink on high ground.
- Following a slow downhill through mopane forest into a vast flat depression;
- Possible spotting of herds of buffalo that love this area;
- Helicopter transfer back to TULUDI CAMP;
- Dinner at the Lodge;

Day 9.10

SAFARI

Tuludi Camp * malaria free



(Time TBA)

- Breakfast served for the guests at the Camp;
- Morning and evening safari and activities:
 - Game drive through the concession for close-up encounters with a range of animals that's as diverse as the landscapes whizzing past.
 - Enjoy a slower pace of life on a walking safari with one of the experienced guides.
 - Drift through the lily pads on a mokoro safari and reach all the corners of the Delta that a vehicle simply can't reach.
 - Float along the waterways and rivers on a boat safari, keeping an eye out for the wildlife wandering beside you.

BEYOND

~ Exclusive Voyage for Cycling Enthusiasts ~

- Relax by the swimming pool and wildlife watch from the comfort of your sun lounger.
- Morning and evening Meditation, Breathwork and Yoga Sessions;
- Dinner at the Lodge;



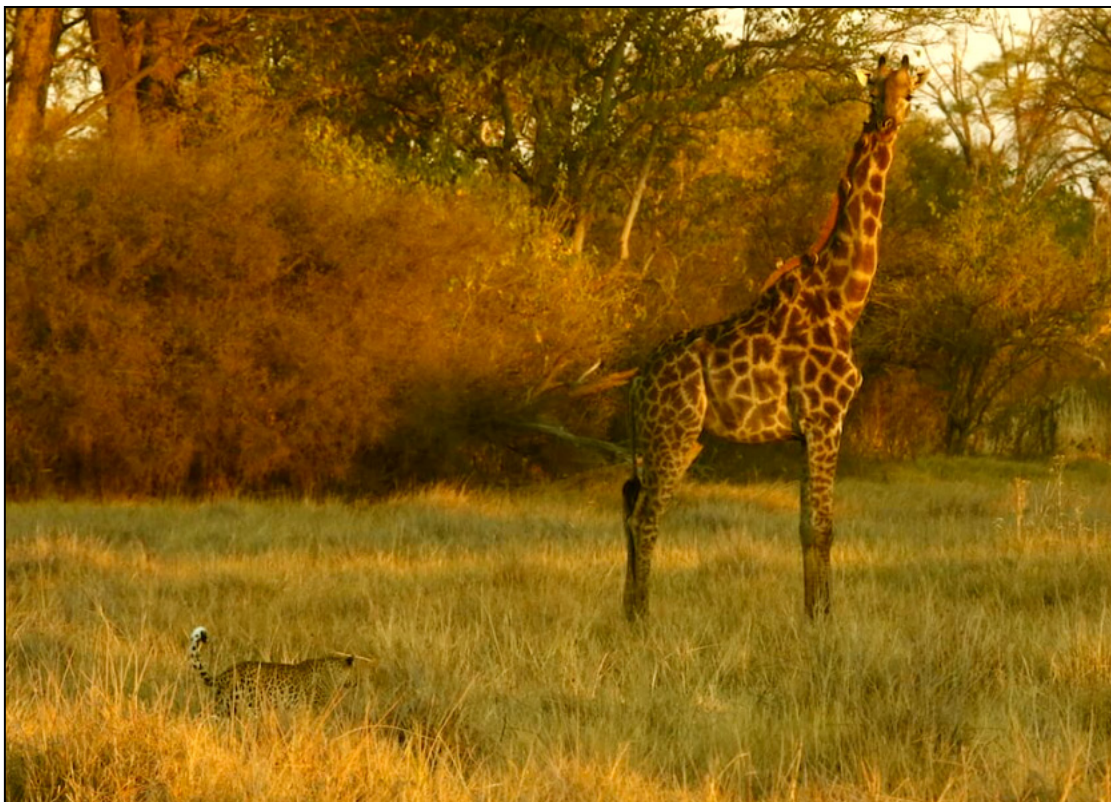
BEYOND

~ Exclusive Voyage for Cycling Enthusiasts ~



BEYOND

~ Exclusive Voyage for Cycling Enthusiasts ~



BEYOND

~ Exclusive Voyage for Cycling Enthusiasts ~



BEYOND

~ Exclusive Voyage for Cycling Enthusiasts ~



BEYOND

~ Exclusive Voyage for Cycling Enthusiasts ~

Day 11

TRAVEL TO NAMIBIA

...

(Time TBA)

- Breakfast served for the guests at the Camp;
- Early Morning Game Drive;
- Lunch;
- Transfer to helipad and 40 minutes flight to Maun;
- Depart to Namibia;

*need to collect more info

Day 12,13,14

NAMIBIA ADVENTURE

...